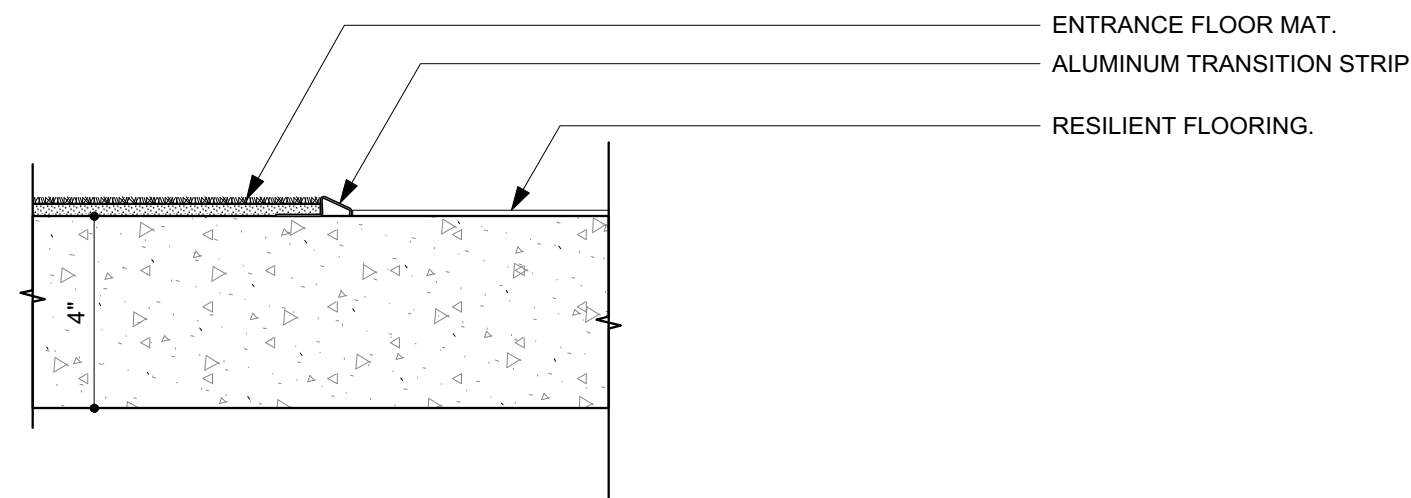
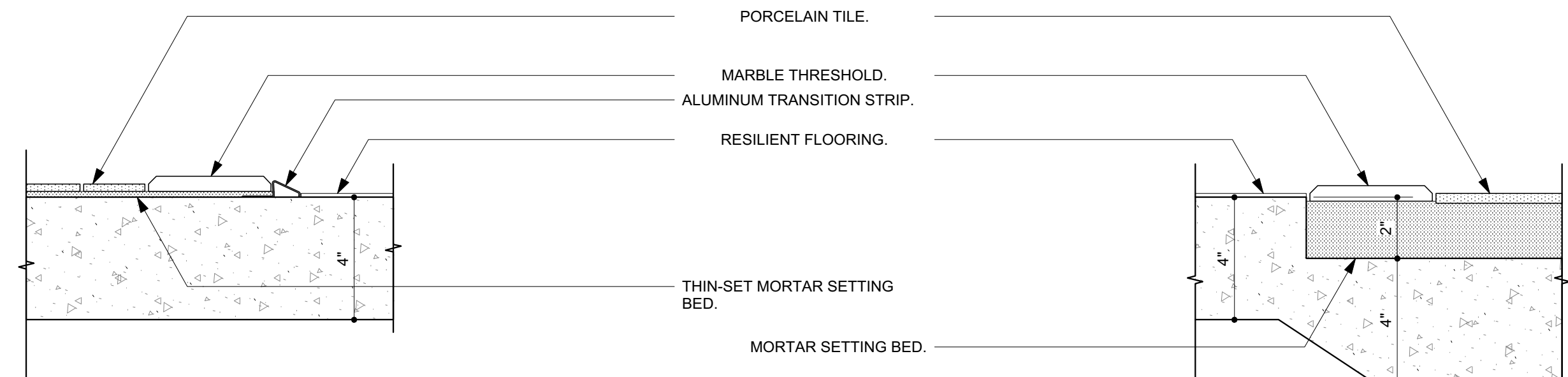


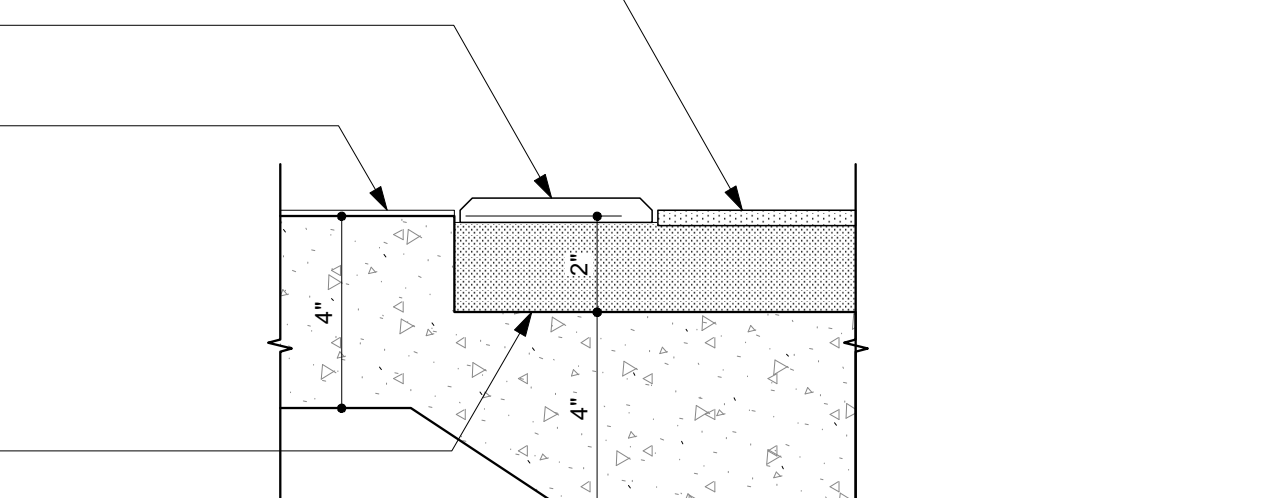
1 ACT @ Beam Bulkhead Detail  
Scale: 3" = 1'-0"



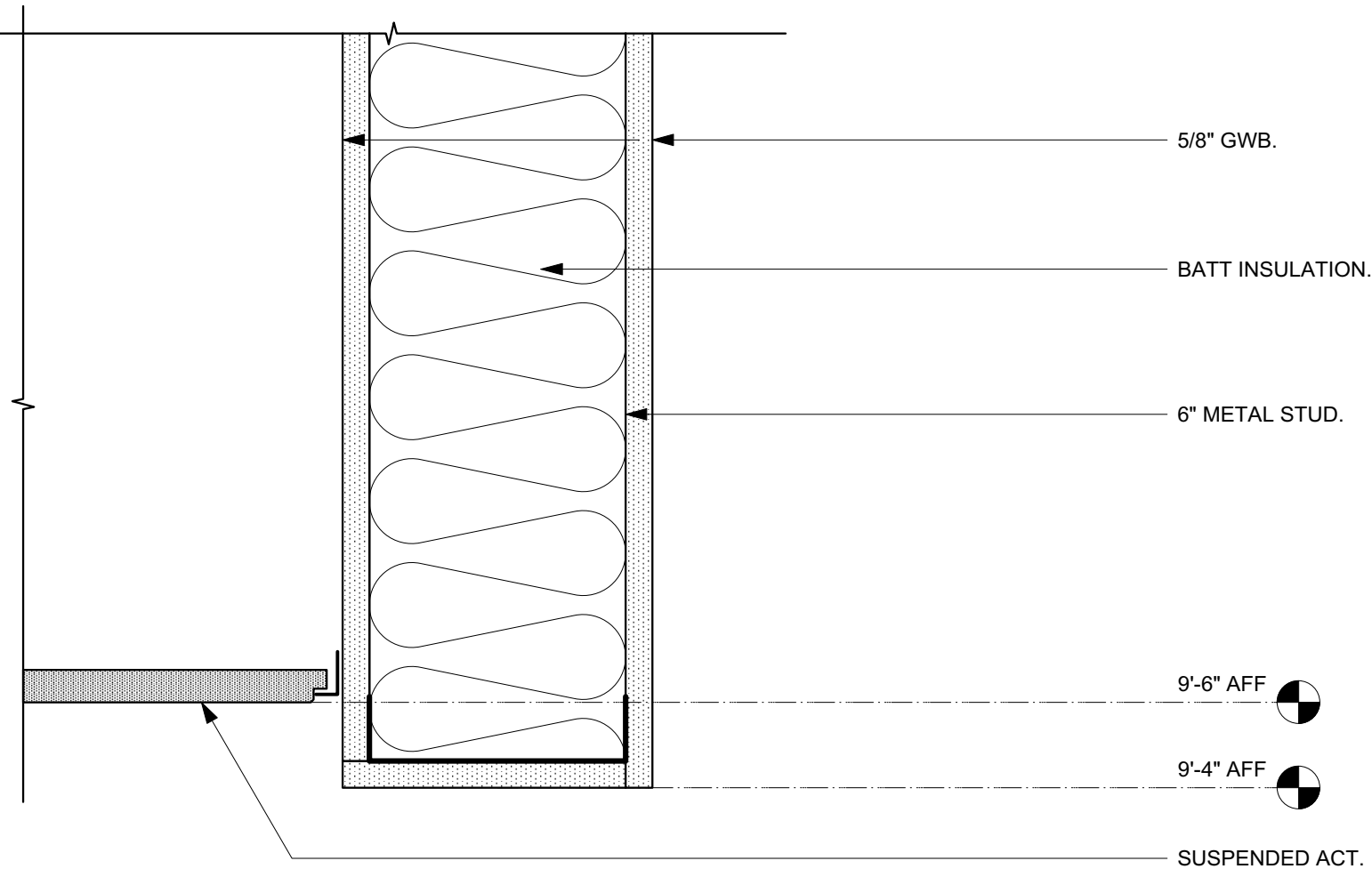
2 Entrance Mat to Resilient Flooring Transition  
Scale: 3" = 1'-0"



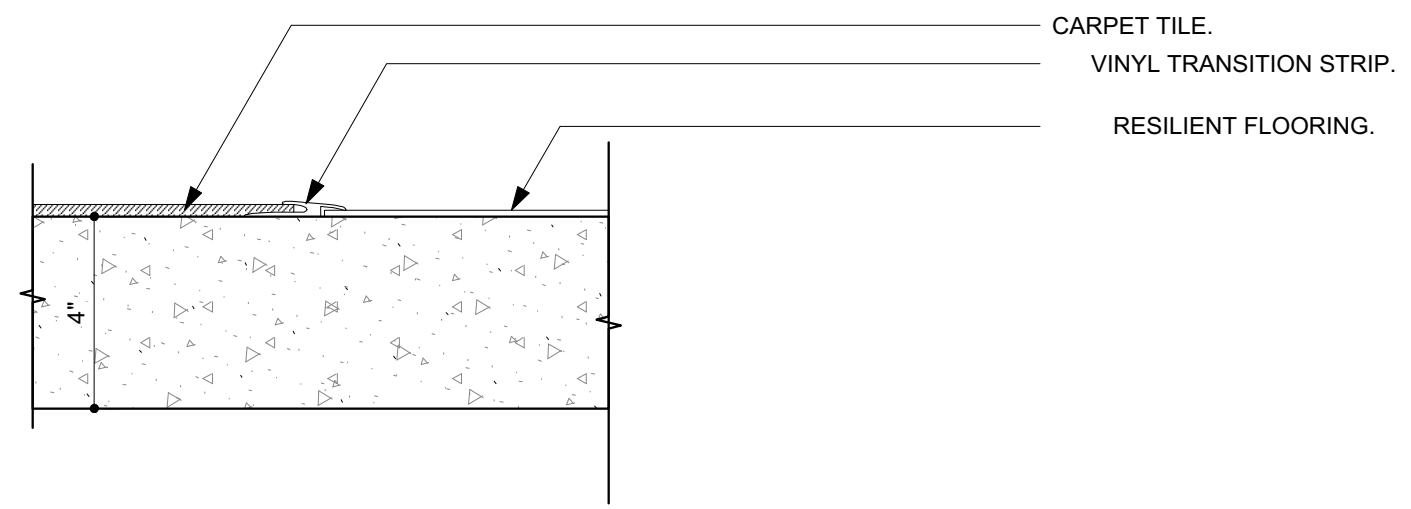
3 Porcelain Tile to Resilient Flooring Transition  
Scale: 3" = 1'-0"



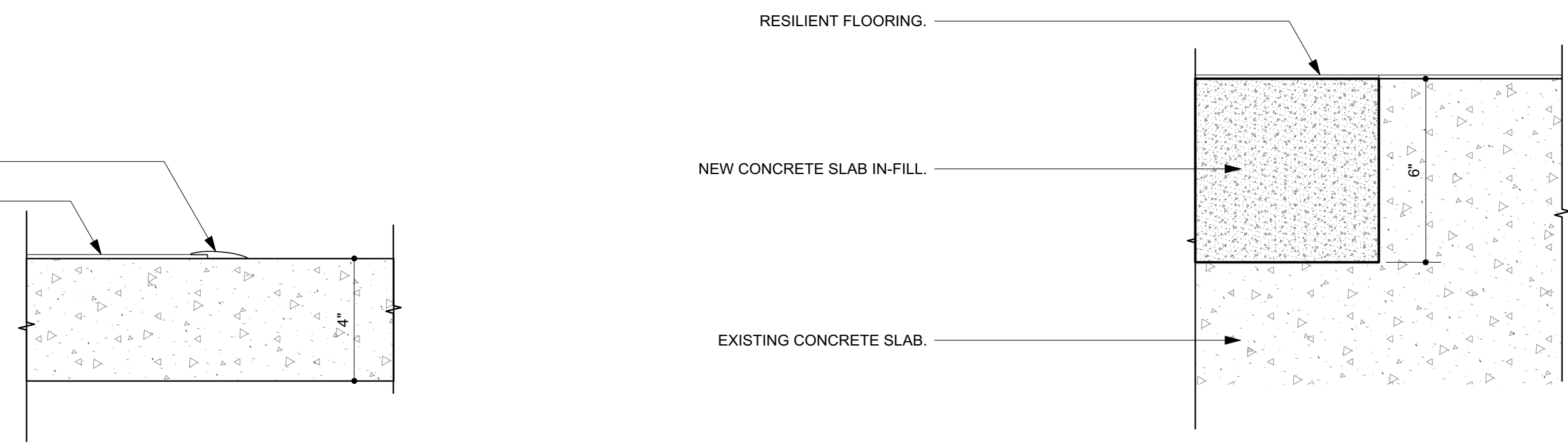
4 Resilient Flooring to Porcelain Tile Transition  
Scale: 3" = 1'-0"



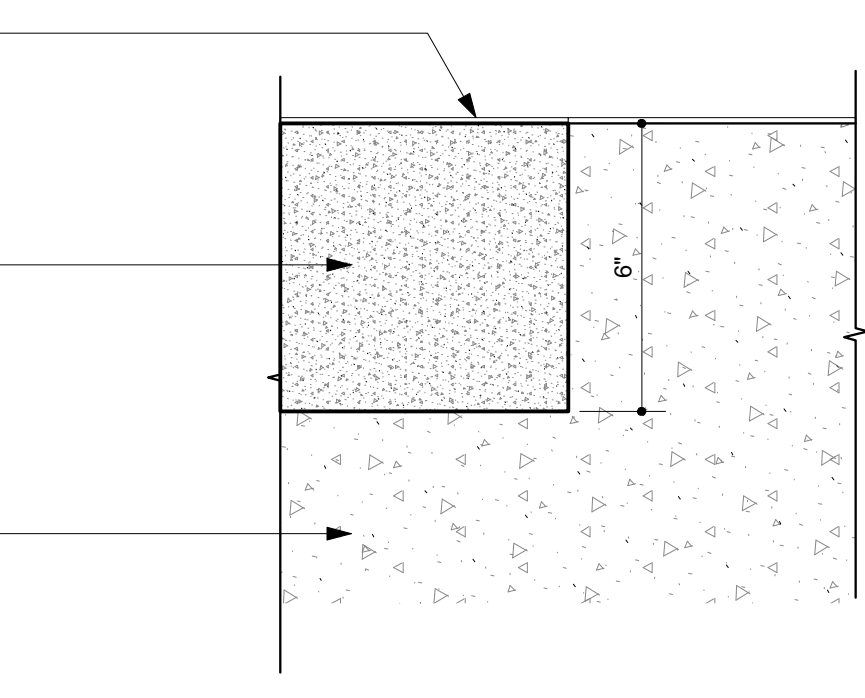
5 ACT @ Beam Bulkhead Detail  
Scale: 3" = 1'-0"



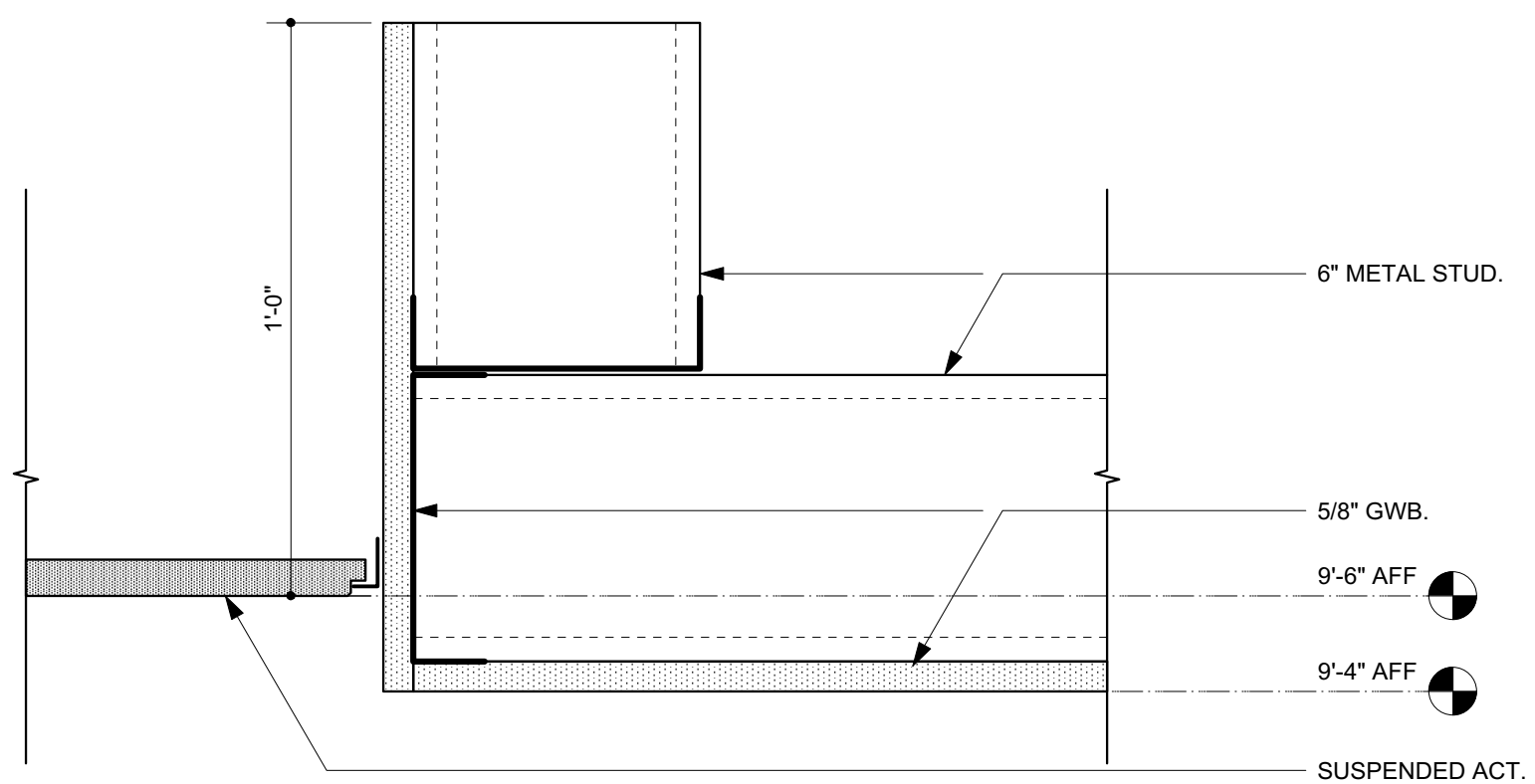
6 Carpet Tile to Resilient Flooring Transition  
Scale: 3" = 1'-0"



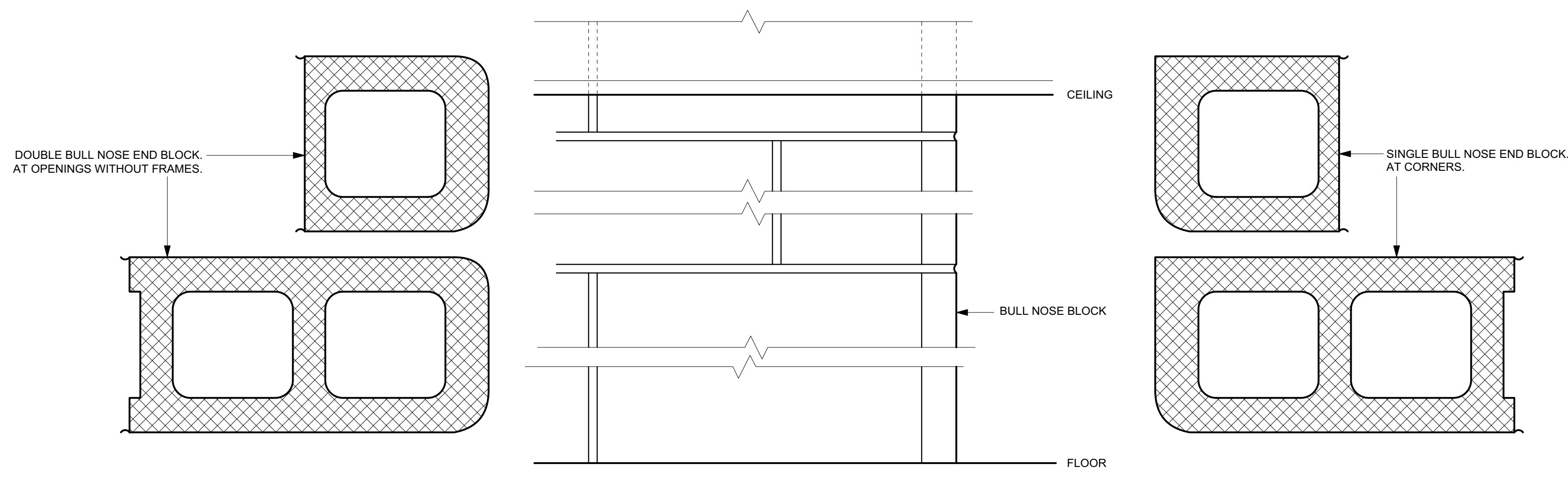
7 Resilient Flooring to Concrete Transition  
Scale: 3" = 1'-0"



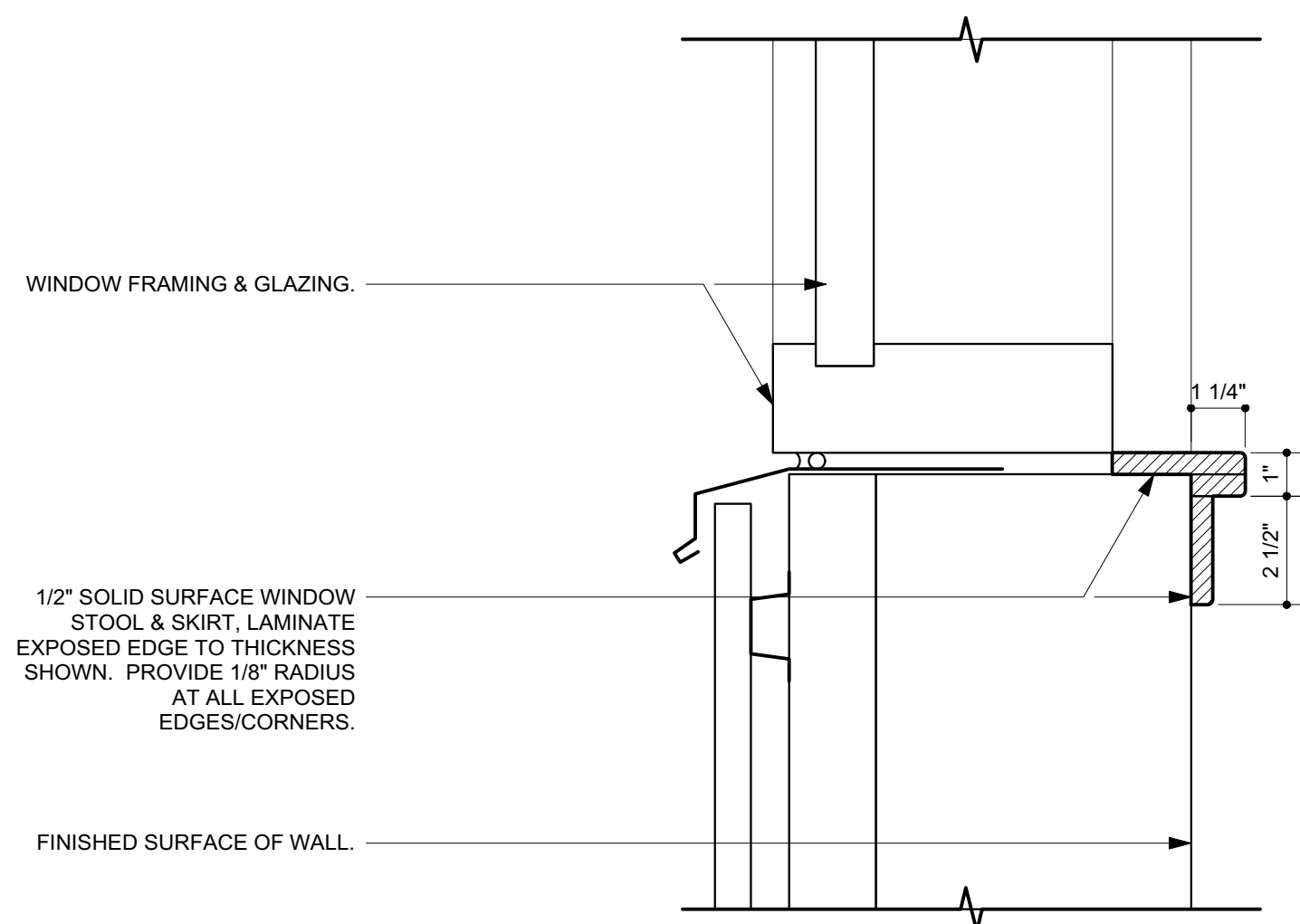
8 Concrete Slab Infill Transition  
Scale: 3" = 1'-0"



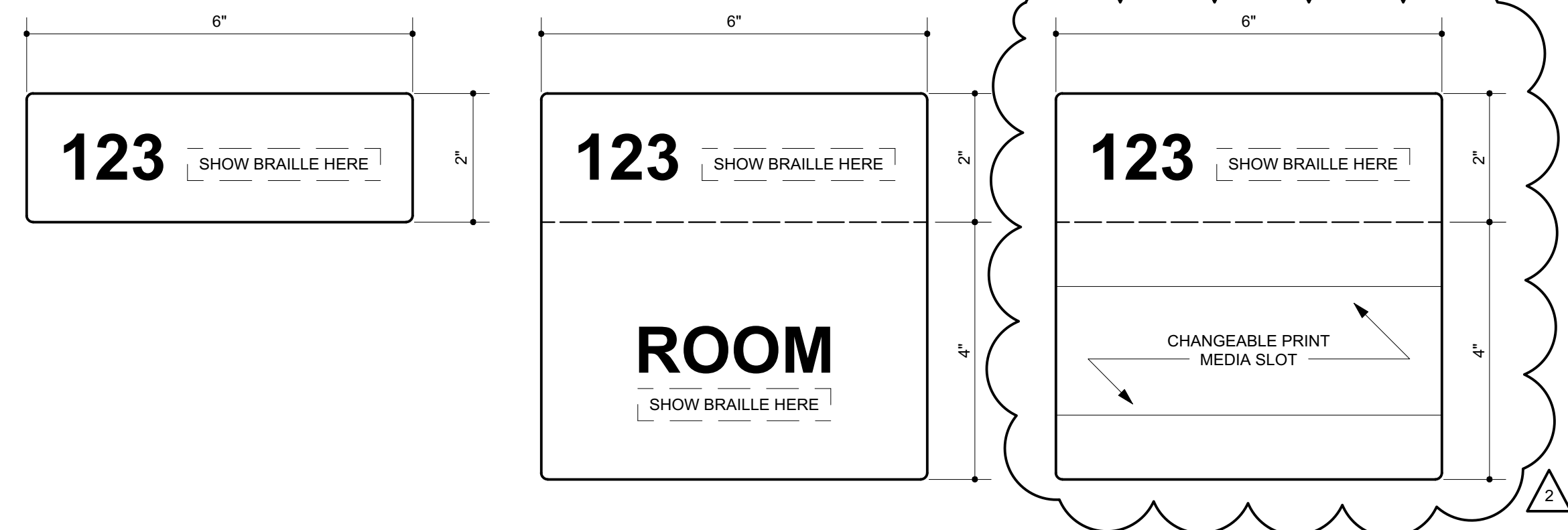
9 ACT to GWB Ceiling Transition Detail  
Scale: 3" = 1'-0"



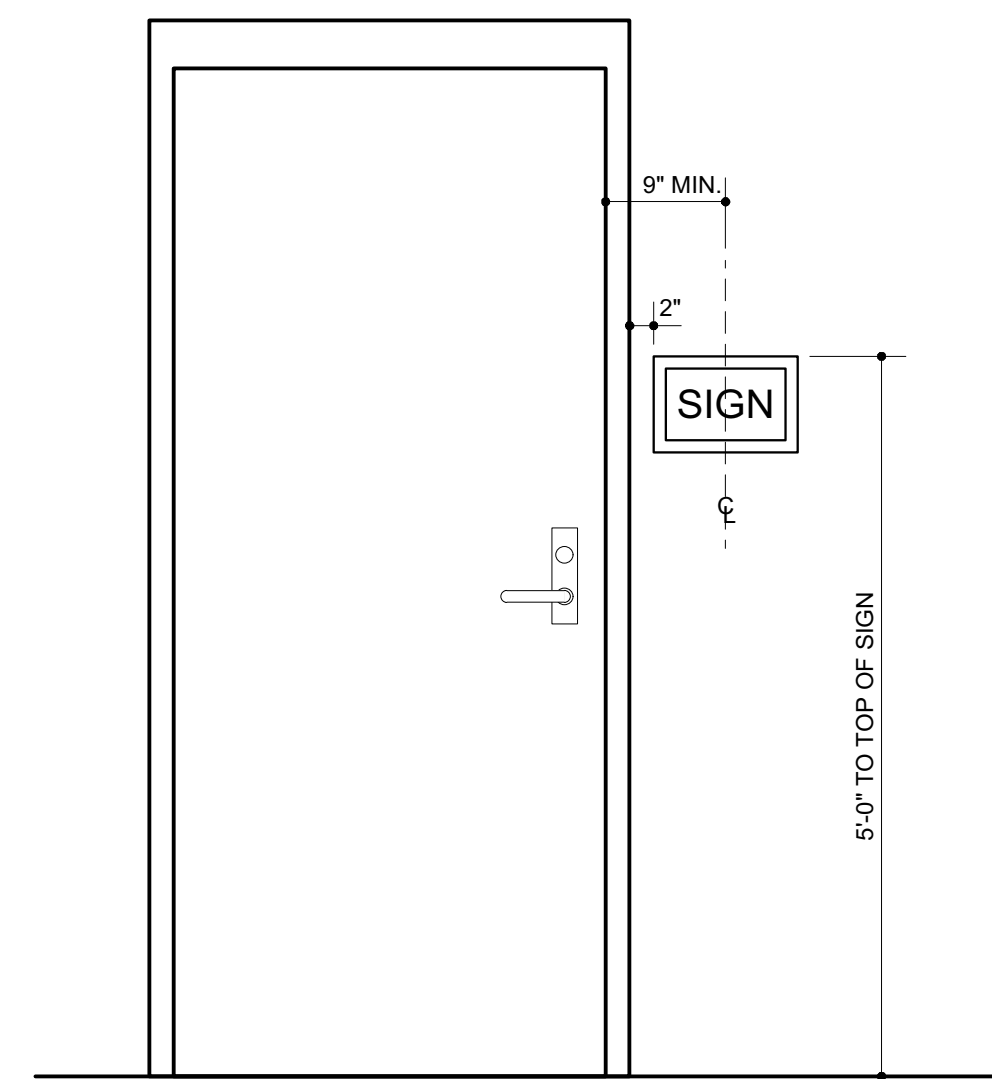
11 Typical Masonry Corner Details  
Scale: 3" = 1'-0"



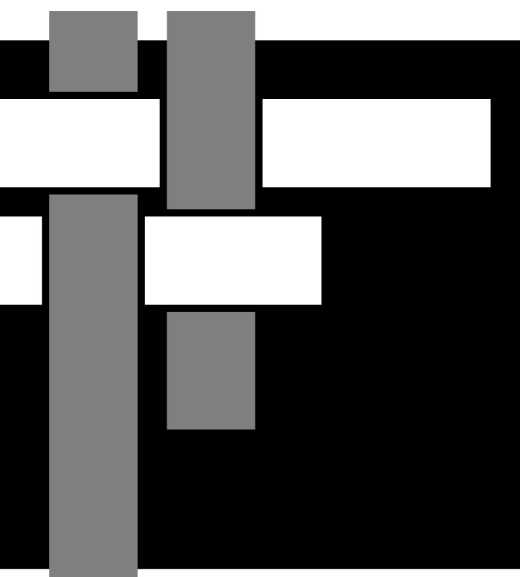
14 Typical Window Stool Detail  
Scale: 3" = 1'-0"



15 Signage Detail  
Scale: Half Actual Size



16 Typical Signage Detail  
Scale: 3/4" = 1'-0"

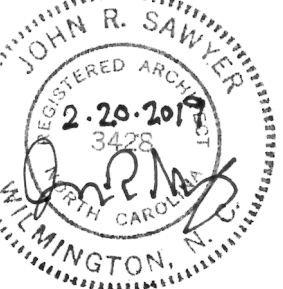


**SAWYER  
SHERWOOD  
& ASSOCIATE  
ARCHITECTURE**  
124 Market St. Wilmington, NC 28401  
910 762-0892 s2a3.com

**PARAMOUNTE**  
122 CINEMA DRIVE WILMINGTON, NC 28403  
Office: (910) 791-6707  
www.paramounte-eng.com

**WOODS ENGINEERING**  
Consulting Structural Engineers  
254 North Front Street Phone: 910.343.8007  
Suite 201 Fax: 910.343.8088  
Wilmington, NC 28401 www.woodseng.com

**CHEATHAM AND ASSOCIATES, P.A.**  
CONSULTING ENGINEERS  
3612 ENTERPRISE DRIVE  
WILMINGTON, NORTH CAROLINA 28405  
PHONE: (910) 452-4210  
FAX: (910) 452-4211  
OFFICE@CHEATHAMPA.COM  
WWW.CHEATHAMPA.COM  
NC LICENSE# C-1073  
JOB # 18049  
**SKA**  
CONSULTING ENGINEERS  
300 Pomona Drive  
Greensboro, NC 27407  
Phone: 336-855-0993  
www.skaeng.com



## Wrightsville Beach Elementary School Addition & Renovation

220 Coral Drive  
Wrightsville Beach, NC

Construction Drawings  
February 20, 2019

Revisions:
<div><div></div><div>ADDENDUM #2: 3/26/19</div></div>

Interior Details